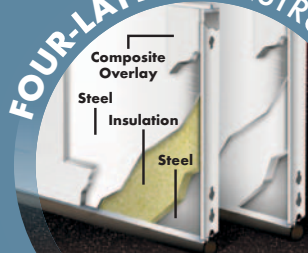


Settlers®

COLLECTION

Settlers® Collection doors provide a traditional Carriage House appearance with upward-acting functionality and durable construction.

FOUR-LAYER CONSTRUCTION



Polyurethane or
Polystyrene
Insulation



**CARRIAGE HOUSE DESIGNS...
DURABLE, RELIABLE CONSTRUCTION**

Model Shown: Settlers® Collection SF22 with SQ23 Windows

CONSTRUCTION AND FINISH

- Base door has a natural woodgrain texture, painted with a baked-on primer and polyester top coat.
- Detailed beveled, coped-edge overlay.
- Windows with complete overlay and true arch designs are available in double strength, insulated or obscure glass. Grilles are removable for ease of cleaning.
- Includes automatic opener reinforcement.
- EZ-SET® Torsion Springs standard on most sizes.
- SXU models have 2" polyurethane insulation (R-value = 18.4).
- SX models have 2" polystyrene insulation (R-value = 9.0).
- SF models have 1-3/8" polystyrene insulation (R-value = 6.5).

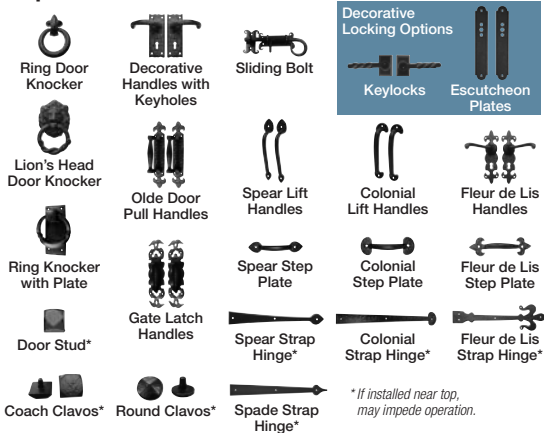
WARRANTIES



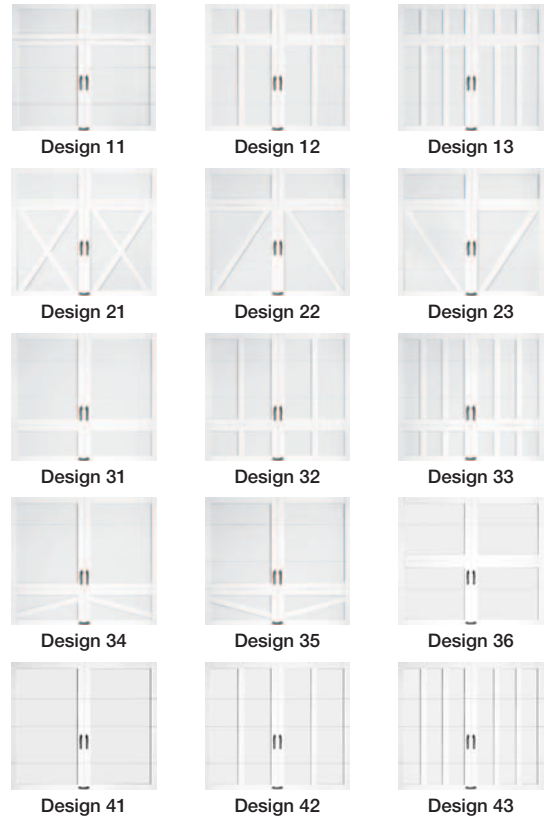
DECORATIVE HARDWARE



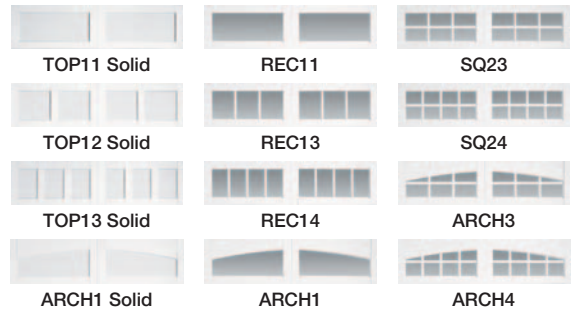
Optional



DOOR DESIGNS



WINDOWS/TOP SECTION OPTIONS



BASE DOOR/OVERLAY COLOR OPTIONS



Note: Door and overlay colors can be mixed and matched.

HOW TO MEASURE YOUR DOOR

1. Measure existing door width and height in feet and inches. This determines the size of door needed. The rough opening should be the same size as the door.

Width: _____

Height: _____

2. Measure for sideroom: 3-3/4" is required on each side for installation of the vertical track for standard extension or torsion springs, or EZ-SET® Torsion Spring. 5-1/2" is required for EZ-SET® Extension Spring.

Sideroom: _____

3. Measure area labeled "headroom" – distance between the top of the door opening ("jamb header") and the ceiling or lowest obstruction (e.g., opener, beams or light fixtures). 10" is required for standard installation of extension springs and EZ-SET® Extension Spring; 12" on standard torsion springs and EZ-SET® Torsion Spring. 14" of headroom required for Carriage House doors. If you have restricted headroom, special hardware is available. Low headroom hardware is available to reduce requirement to as low as 4-1/2" (minimum with standard extension spring or EZ-SET® Extension Spring). EZ-SET® Torsion Spring low headroom requirement is 9-1/2". Note: If door height extends above the opening, the headroom measurement should be adjusted accordingly.

Existing headroom: _____

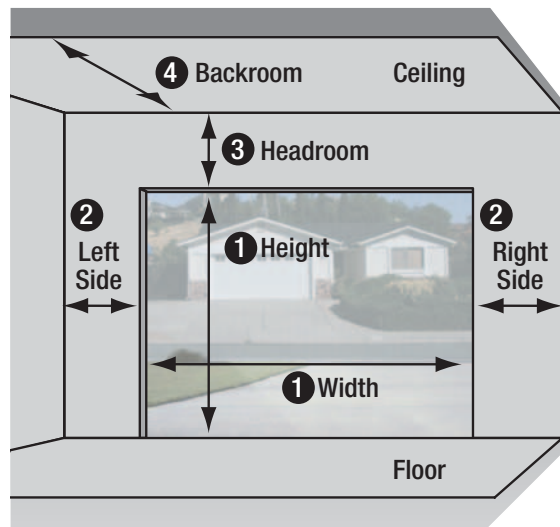
Headroom needed: _____

4. Measure area labeled "backroom" – distance is measured from the garage door opening toward the back wall of the garage.

Backroom: _____

Common garage door sizes include 8' wide x 7' high; 9' wide x 7' high; and 16' wide x 7' high. Holmes manufactures most doors in nearly any size you require.

HOW TO MEASURE DIAGRAM



HOLMESHHELPS
Garage Door Answers Fast.

For answers about choosing, installing and maintaining Holmes Garage Doors, visit us at

www.holmeshelps.com and
www.holmesgaragedoor.com

or call the Holmes Helpline® at 800-557-0488.